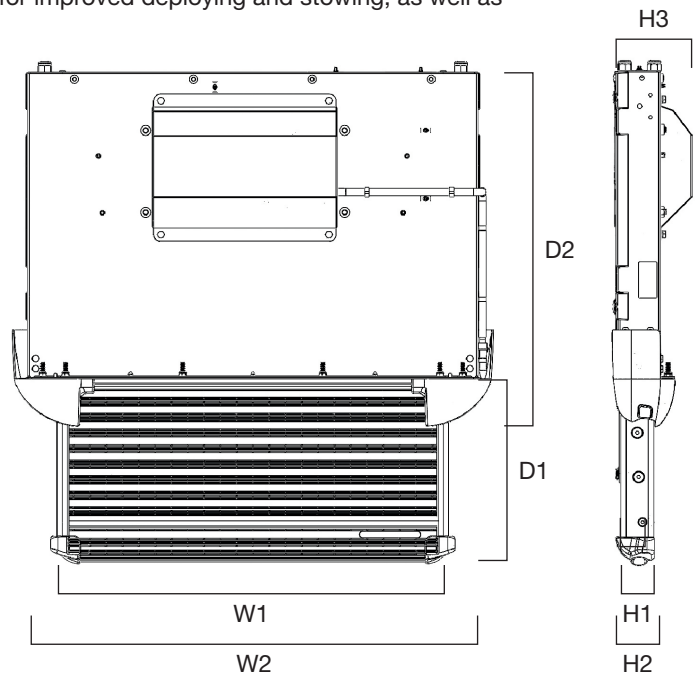


Glide Step – an industry leading electric vehicle side step.

Our Glide Step range, available in 600mm and 1200mm widths, provides the best possible reliability and performance, while also offering aesthetic integration with modern vehicles. This means it not only visually complements taxis, minibuses and ambulances, but has been tested rigorously to ensure it won't let you down in the field, minimising off-road time.

Every aspect of the Glide Step has been refined by our in-house team of design engineers. The step now features an all-new motor, LED strip for better visibility, and new wheels for improved deploying and stowing, as well as easier cleaning, thanks to lower covers.

Dimensions			
		GS600	GS1200
Tread width	W1	620mm	1220mm
Cassette width	W2	738mm	1338mm
Tread depth	D1	284mm	284mm
Cassette depth	D2	559mm	559mm
Tread height	H1	58mm	58mm
Cassette height	H2	95mm	95mm
Cassette height (with motor box)	H3	121mm	121mm

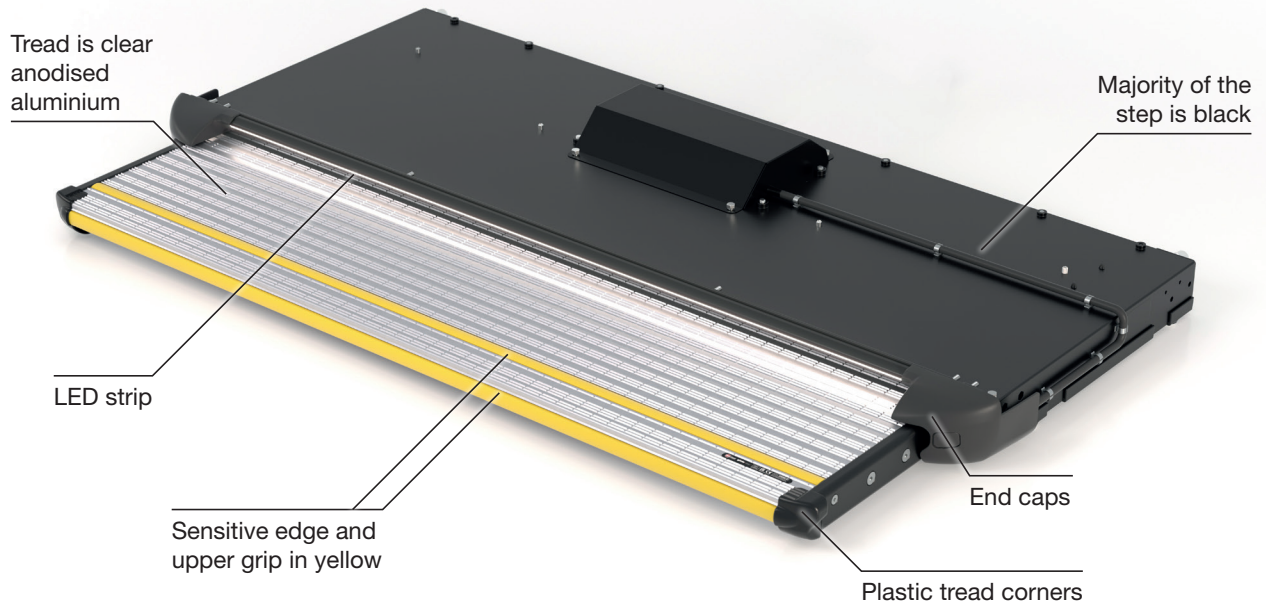


Key Information About Your Step

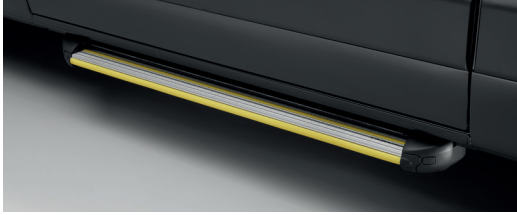

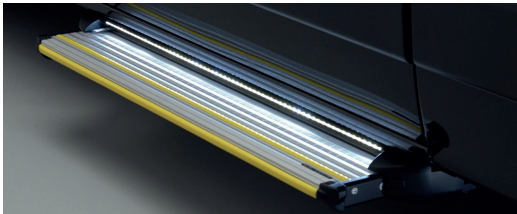

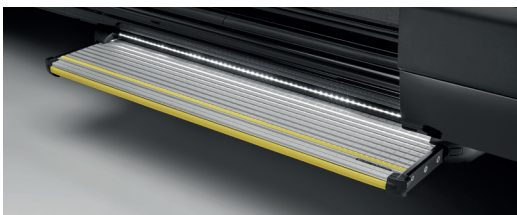

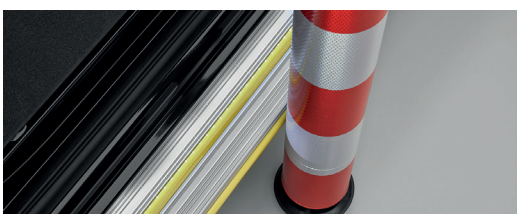

	Product Weight	Packaged Weight	Safe working load	200kg
600mm				
Step	24.5kg	26.5kg	Decibel reading	The A-weighted emission sound pressure level of this machinery has been measured and was found to not exceed 71.6 dB.
Fitting Kit	0.46kg - 5.74kg	0.66kg - 5.94kg		
Loom	0.18kg	0.2kg		
1200mm				
Step	33kg	34.9kg		Single person use.
Fitting Kit	0.46kg - 2.32kg	0.66kg - 2.52kg		
Loom	0.18kg	0.2kg		
			Deploy/Stow time	1.5 seconds

Modern Aesthetics

Special consideration has gone into the visual design of the Glide Step, so that it complements the evolving aesthetics of modern passenger and commercial vehicles. The step utilises a combination of black painted steel, clear anodised aluminium, and a yellow sensitive edge and upper grip. Thanks to this, when the step is stowed the plastic tread corners integrate seamlessly with the carefully designed stylish end caps. The LED strip not only functions to enhance visibility for those entering/exiting the vehicle, but is the finishing visual touch that sets the Glide Step apart from other side access steps.



Dashboard LED Lights

	Step	Switch
Stowed		
In Motion		
Fully Deployed		
Obstruction Encountered		

The step is configured to deploy automatically when the vehicle door is opened and to stow when the door is closed (note: the circular dashboard switch needs to be pressed to power the step).

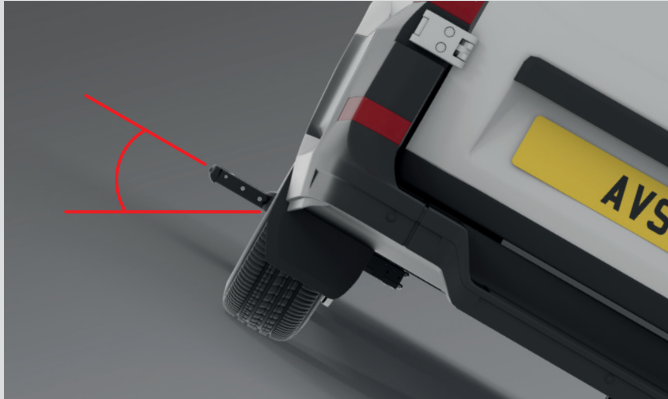
The green dashboard LED will flash when the step is moving, and remains ON when deployed. When the step is stowed the LED is OFF. If the step's sensitive edge encounters an obstruction the light will change to red.

Testing



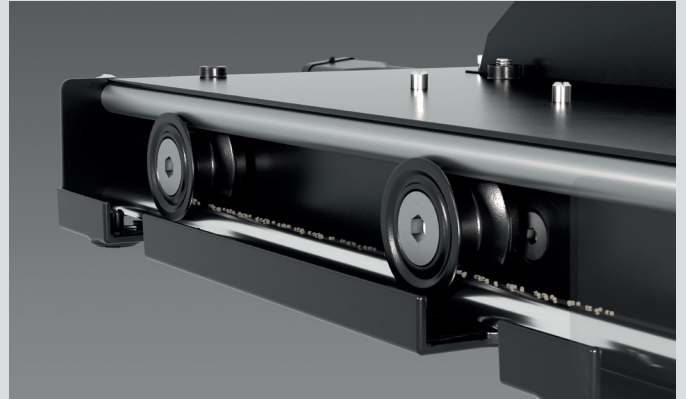
The Glide Step has undergone a rigorous series of tests to ensure safety, reliability and premium performance. This includes cycle load testing, increasing weights in both central and off-centre positions for tens of thousands of cycles.

Features



New powerful motor

The Glide Step is powered by a much stronger motor than previous models, meaning that the step can deploy at any angle or incline you happen to be parked on.



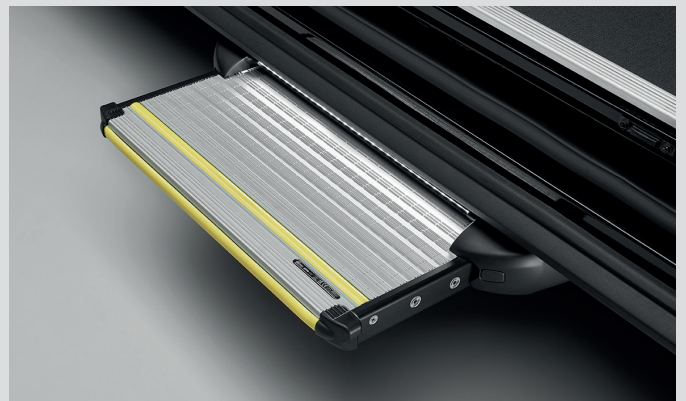
Ridged wheel shape

The new internal guide wheel design allows debris to pass through for smooth reliable action, even in the toughest of conditions.



Sensitive safety edge feature

A sensitive edge safety feature halts power to the motor upon contact with an obstruction. As an added safety feature, the step will not deploy if the sensitive edge is damaged.



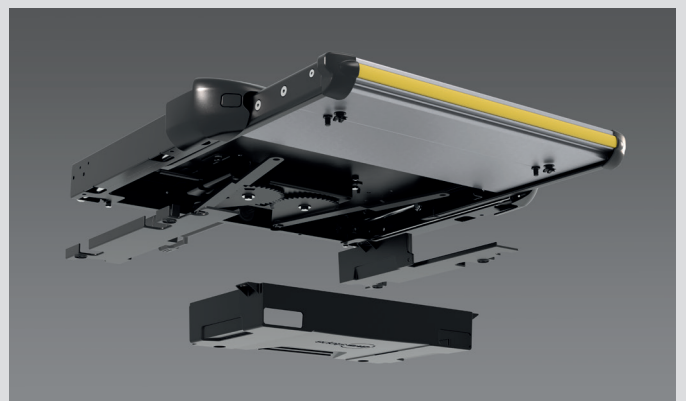
LED strip light

A bright, flashing LED light alerts the user when the step is deploying and stowing. When fully deployed, the light stays on for better visibility.



Bespoke fitting kits

The Glide Step is available for all popular passenger vehicles / ambulances, and is supplied with a bespoke fitting kit for each model.



Removable underside covers

The Glide Step will need minimal cleaning to release debris, and the removable covers make this extremely easy to do so.

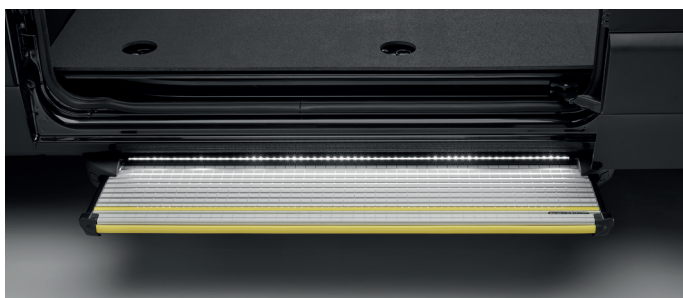
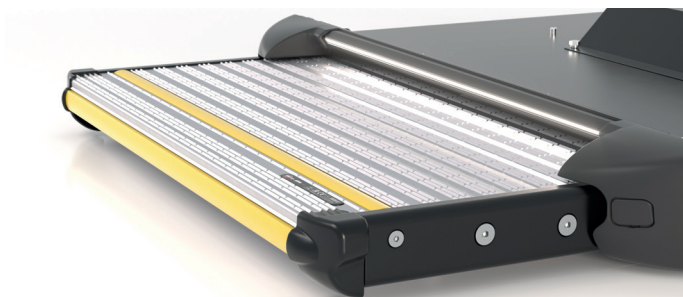
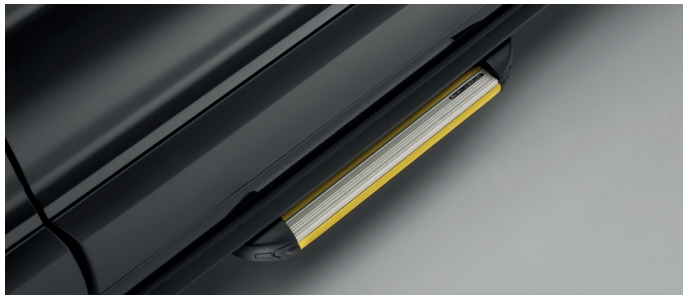
Additional Features

- **Painted Protection** - The idler arm, motor arm, motor bracket and connecting arms are now electro painted to improve the corrosion resistance and are salt spray tested to 1000 hours.
- **UV Stability** - The upper seal, lower seal and sensitive edge are now UV stable, making the step more weather resistant.
- **Twin arms** with smooth reliable action.
- **Heavy duty high powered motor** - 50Nm torque.
- **Detailed user manual** provided for the van driver including recommended maintenance routine and required servicing schedule.

Control Box



If the Glide Step ever needs recalibrating, this can be done quickly and easily, to get the vehicle back on the road as fast as possible without needing an engineer to be sent out.



Technical Information

Voltage	10v - 16v
Current amps	Nom 3A, Max 10
Protection	Polyswitch resettable fuse
Internal switches	None
Lead	External plugs to allow for quick removal of the step
Warranty	3 years
VCA approved?	Yes
EMC conforming?	Yes
UKCA / CE compliant?	Yes

Materials

Tread	Aluminium
Running gear	Nylon and stainless steel
End caps	Plastic
Underside covers	Plastic

